

February 12, 2007

Vol. 133



## UPCOMING EVENTS



George Lopez, NH Pianist

## Timberlane Pops Concert

Featuring



Will McMillin, Boston Vocalist

Sunday, March 18, 2007 at 2:00 PM

Timberlane Performing Arts Center Auditorium

Tickets are \$15 – Students and Seniors \$10.

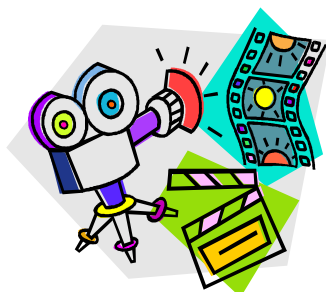
Tickets for **The Timberlane Pops Concert** are available at the  
Timberlane Performing Arts Center **Box Office**

Call 603-382-6541 ext. 243

For future Timberlane Performing Arts Center Events visit

[www.timberlanepac.org](http://www.timberlanepac.org)

*Congratulations* to the following students that participated in the New Hampshire Music Educators All State Jazz Festival this past weekend at Nashua South HS. The students are, Colin Mainella trumpet, Eric Klaxton Alto Saxophone, Christos Zevos Bass, Matthew McSweeney, Drums, Lauren Paley Soprano, Angela Palermo Soprano, Dom Arena Tenor, and Zachary Onett Tenor.



## SENIOR CITIZEN CINEMA

### TUESDAY, FEBRUARY 20

### 3:00 PM

### PAC AUDITORIUM

### "THE THIN MAN"

*Please notify my office ASAP if any of the dates or  
Information below is incorrect.*

<u>Monday</u>	02/12	Rachel's Challenge	AUD	7:30 AM – 9:00 PM
		HS Musical REH	RH	2:30 – 4:30 PM
		HS Rock ENS REH	MSBH	5:00 – 6:30 PM
<u>Tuesday</u>	02/13	MS Assembly	AUD	7:00 – 10:30 AM
		HS Band REH	AUD	10:00 – 12:30 PM
		MS Chamber REH	AUD	12:00 – 2:15 PM
		HS Orch REH	AUD	2:30 – 4:00 PM
		HS Drama REH	RH	2:30 – 4:00 PM
		MS Chamber Choir REH	MSCH	2:30 – 3:30 PM
		MS Jazz Band REH	BH/OH	2:30 – 4:00 PM
<u>Wednesday</u>	02/14	HS/MS Chamber REH	AUD	7:30 – 12:30 PM
		HS Combo REH	BH	2:30 – 4:00 PM
		HS Drama REH	RH	2:30 – 4:00 PM
		HS/MS Guitar REH	MSBH	2:30 – 3:30 PM
		MS Brass ENS REH	CH	2:30 – 3:30 PM
		TMA Meeting	BH	6:30 – 9:00 PM
		Timb Comm. Chorus REH	CH	7:00 – 8:30 PM
<u>Thursday</u>	02/15	HS Orch REH	AUD	10:00 – 12:30 PM
		HS Combo REH	BH	2:30 – 4:00 PM
		HS Musical REH	AUD	2:30 – 4:00 PM
		HS Drama REH	RH	2:30 – 4:00 PM
		MS Beg Jazz Band REH	CH	2:30 – 3:30 PM
		MS Chamber Choir	MSCH	2:30 – 3:30 PM
		MS Chamber Orch REH	MSBH	2:30 – 3:30 PM
		Timb. Comm. Band REH	BH	7:00 – 9:00 PM
		HS Flute Choir REH	OH	6:00 – 7:00 PM
<u>Friday</u>	02/16	HS Orch REH	AUD	10:00 – 12:30 PM
		HS Saxophone Ens REH	BH	2:30 – 4:00 PM
		HS Musical REH	AUD	2:30 – 6:30 PM
<u>Saturday</u>	02/17			
<u>Sunday</u>	02/18			

OH = Orchestra Hall/CH = Chorus Hall /Aud = Auditorium/RH = Recital Hall/REH = rehearsal  
MS BH=Middle School Band Hall/MS CH= Middle School Chorus Hall

Order all event tickets on line at <http://www.mktix.com/>  
For directions and additional information go to:  
[www.timberlanepac.org](http://www.timberlanepac.org)